



Integrated type wireless bar coater
Durability,Cleanability and Improved coating surface condition

OSG SYSTEM PRODUCTS CO.,LTD.

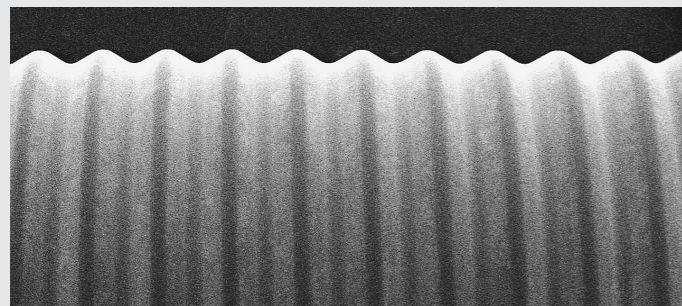
LABO

Series

Vol.2

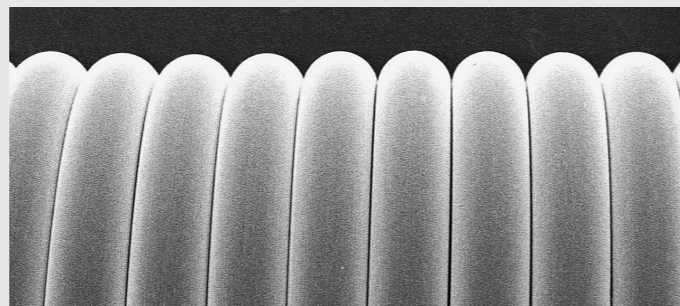
Wireless-Bar

Integrated type wireless bar coater does not have any wires wrapped around it, so it will not break or slip, and has a long life



《Wireless Bar》

- Integrated design free from breaking
- Integrated design free from loosening
- Free from clogging
- Easy cleaning



《Wire Bar》

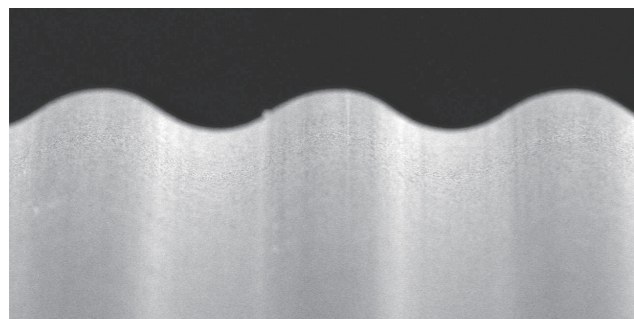
- The wire may break
- The wire may loose
- Easy to cause clogging
- Not easy to clean

Cleaning comparison

Comparison of cleaning between wireless bar and wire bar

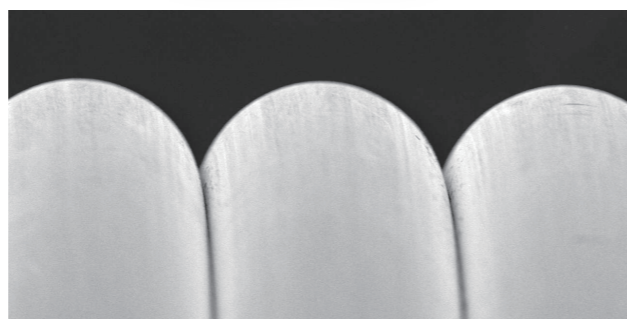
Wireless Bar

D-Bar (#4Equivalent OSP-08)



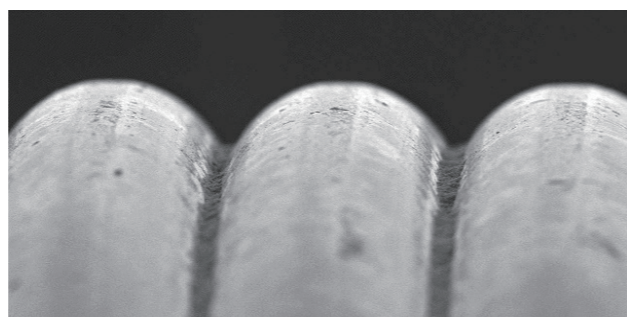
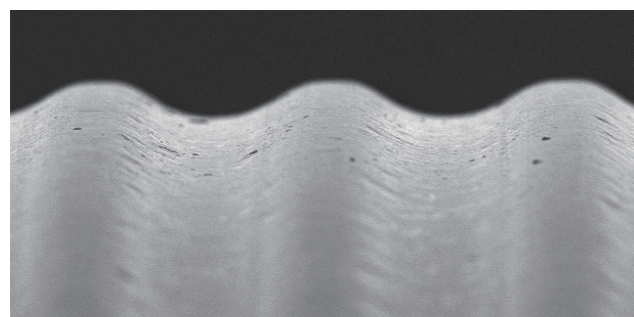
Wire Bar

Wire-Bar (#4)



[Coating ▶ cleaning property ▶ Wiping]

×100times



Select-Roller / A-Bar

◎Select-Roller L250

- Handle Material : Aluminum
- Jig,screw : Stainless steel



- External diameter : φ10
- Material : SUS304
- Unit : mm

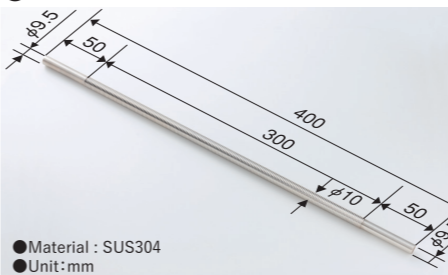
◎Select-Roller L60

- Handle Material : Stainless steel+hard chrome plating
- Jig,screw : Stainless steel



- External diameter : φ10
- Material : SUS304
- Unit : mm

◎A-Bar



- Material : SUS304
- Unit : mm

◎Coating-Test-Kit L250

Outer dimensions : 456*384*110



◎Coating-Test-Kit L60

Outer dimensions : 307*260*74



- Set : ●Select-Roller (a Special packing box) : 10pcs
 ●Handle : 1pc ●Jig : 1pc ●Screw : 6pcs (2pcs spare)
 ●Wrench : 1pc ●Stainless steel cleaning plate : 1pc

Specification Select-Roller / A-Bar(Common)

| film thickness μm/wet(Max) | Wire Bar models (correspond) | Standard specifications | Special specifications |
|-------------------------------|---------------------------------|----------------------------|---------------------------|
| — | #0 | OSP-00 | — |
| 1.5 | #0.7 | OSP-1.5 | — |
| 2 | #1 | OSP-02 | — |
| 3 | #2 | OSP-03 | — |
| 4 | #2.7 | OSP-04 | — |
| 5 | #3 | OSP-05 | — |
| 6 | #3.4 | OSP-06 | — |
| 7 | #3.8 | OSP-07 | — |
| 8 | #4 | OSP-08 | — |
| 9 | #4.8 | OSP-09 | — |
| 10 | #5 | OSP-10 | — |
| 12 | #5.5 | OSP-12 | — |
| 13 | #6 | OSP-13 | — |
| 15 | #6.6 | OSP-15 | — |
| 17 | #7 | OSP-17 | — |
| 18 | #8 | OSP-18 | — |
| 22 | #9 | OSP-22 | — |
| 25 | #10 | OSP-25 | — |
| 30 | #12 | OSP-30 | — |
| 35 | #14 | OSP-35 | — |
| 42 | #16 | OSP-42 | — |
| 47 | #18 | OSP-47 | — |
| 52 | #20 | OSP-52 | — |
| 80 | #30 | OSP-80 | OSP-80T |
| 100 | #37 | OSP-100 | OSP-100T |
| 120 | #46 | OSP-120 | OSP-120T |
| 150 | #55 | OSP-150 | OSP-150T |
| 180 | #68 | — | OSP-180T |
| 200 | #75 | — | OSP-200T |
| 230 | #84 | — | OSP-230T |
| 250 | #90 | — | OSP-250T |
| 270 | #99 | — | OSP-270T |
| 300 | #108 | — | OSP-300T |
| 330 | #119 | — | OSP-330T |

Special specifications

suitable for thick film wet coating and high viscosity coating

Point 1 Maximum wet film thickness is 2.2 times that of conventional products

Point 2 Reduces streaking in high-viscosity, thick film wet coating

7 Specifications added

OSP-330T
330μm/wet
(MAX)

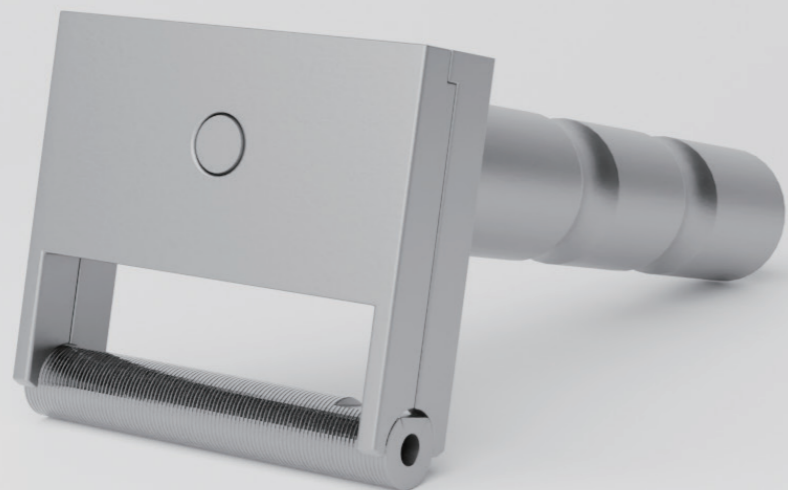


- ※ Film thickness μm/wet (max) means when liquid transfer rate is 100%.
- ※ Coating thickness varies depending on coating model, substrate, and coating liquid.
- ※ For specifications, please refer to the table above.

- ※ Not suitable for all coating fluids.
- ※ Uses Select-Roller Takumi (featured on page 3).
- ※ Uses water-based multi-color paint
- ※ Coating comparison data is listed on pages 9-10.

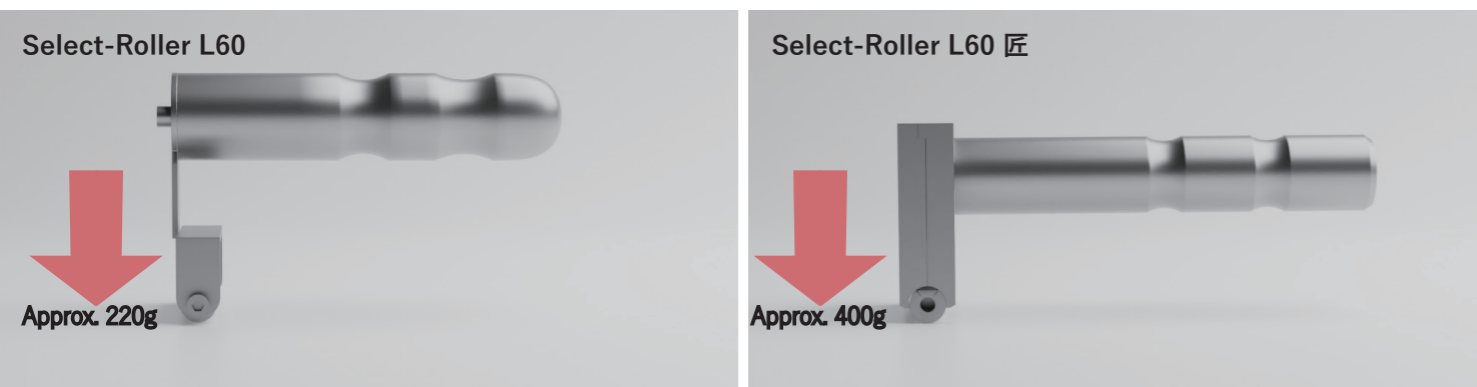
Select-Roller L60 TAKUMI

- Material
- Bar: Stainless
- Handle: Stainless



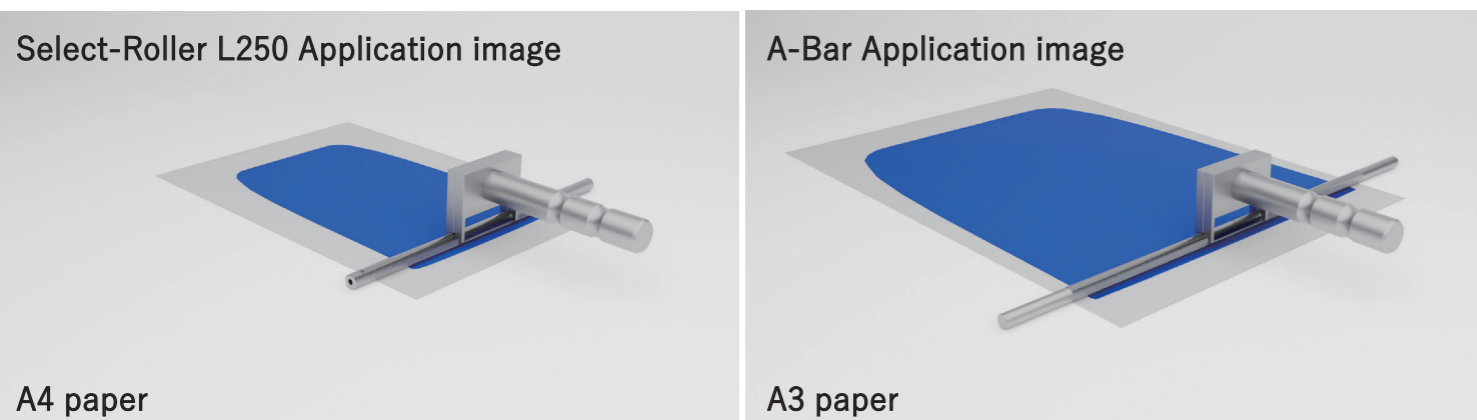
- External diameter : $\phi 10$
- Material : SUS304
- Unit : mm

◇ With an emphasis on head balance, we offer an environment that makes application easier.



Compared to the standard type, it achieves smoother application. The coating speed can also be easily adjusted during manual evaluation, making it possible to stably create coating films with higher precision.

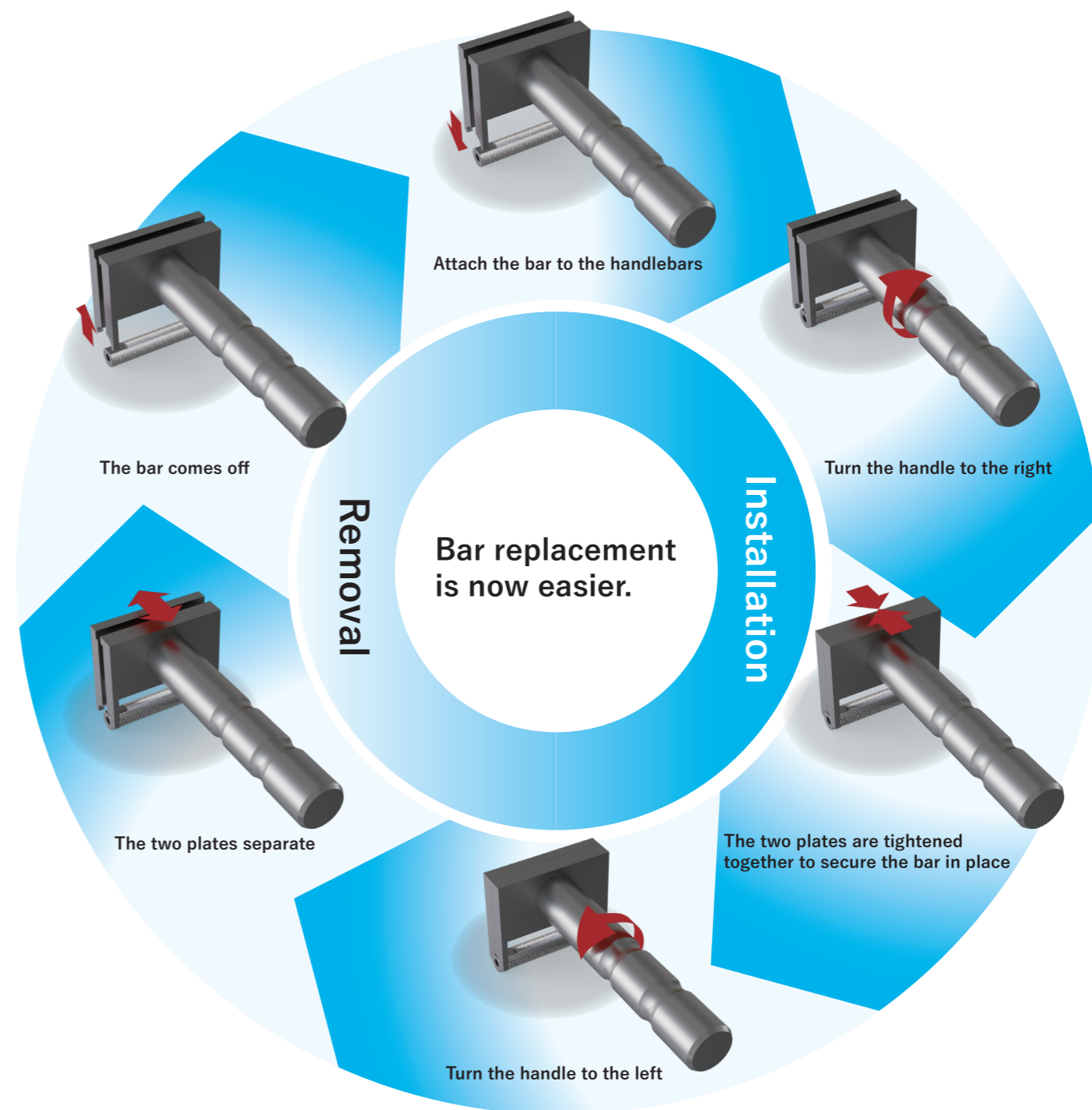
◇ Stable application can be achieved even when a long bar is attached.



It can also be installed on the existing Select-Roller L250/A-Bar. Mounting size: $\phi 10$, total length 60mm~

We have improved the popular Select-Roller to make it even easier to use.

◇ Bar installation and replacement is now easier.



◇ Handling Precautions

- ※ Be careful not to overtighten the handle screws. Just tighten the screws appropriately to use.
- ※ When installing the bar, be careful not to apply too much force. This can cause dents in the grooves and scratches.
- ※ Please install and remove the bar on a workbench. There is a risk of the bar falling and being scratched.



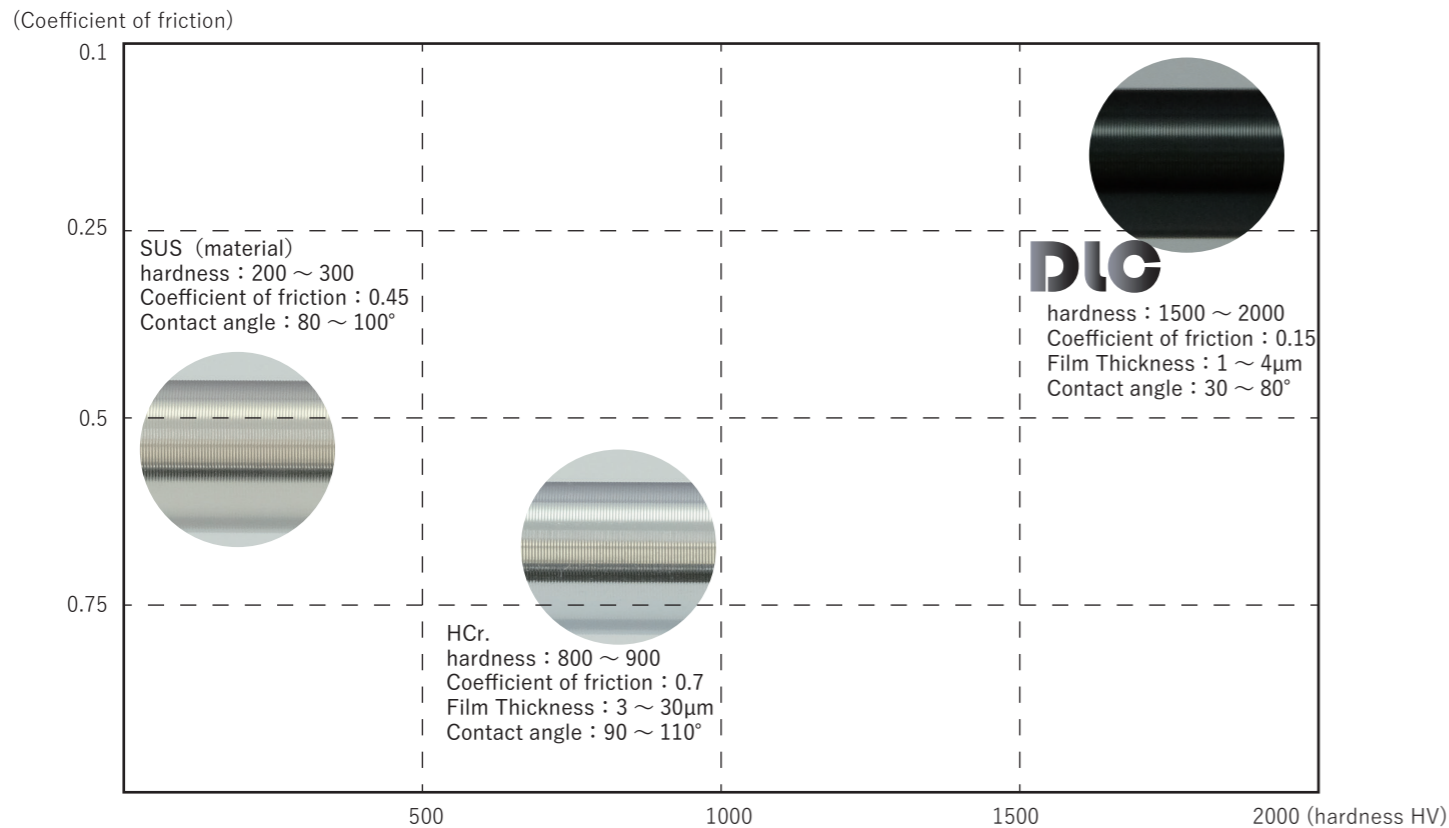
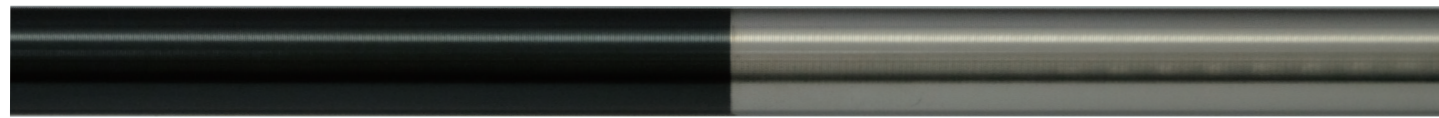
Notes



Installation video

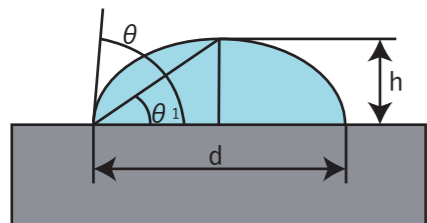
DLC Diamond-like carbon surface treatment

Made to order (Custom Fabrications)



In addition to its high hardness, DLC treatment has a low coefficient of friction, which improves wear resistance and is expected to reduce the occurrence of coating scratches.
In addition, compared to the SUS material and HCr treatment, it has a highly hydrophilic property, so you can expect improved leveling of the coating liquid.

Contact angle measurement using the $\theta/2$ method with a sessile drop method



$$\tan \theta_1 = h / (d/2)$$

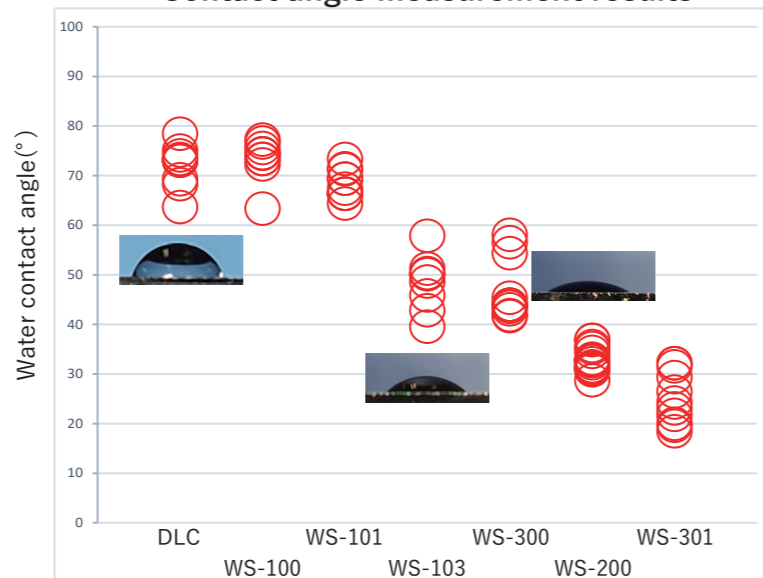
$$\theta = \theta_1 \times 2$$

$$\theta = 2 \times \tan^{-1} [h / (d/2)]$$

Test condition

Equipment used : Micropipette
Liquid used : Pure water
Volume : 3 μl

Contact angle measurement results



※ DLC is the evaluation result of the base material (silicon wafer).
※ Other surface treatments are the evaluation result of SUS304 (surface roughness Ra0.02mm).
※ Pure water was used to evaluate the contact angle.※ Please feel free to contact us regarding the addition of other functionality.
※ In addition to bar coaters, we also accept DLC treatment for gravure rolls, guide rolls, parts, slitter knives, etc.

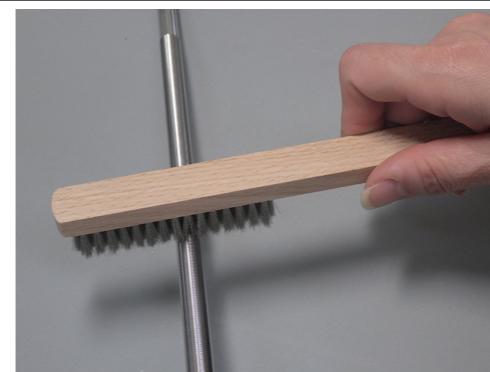
Stainless steel cleaning brush



• Hair tips reach down to details with ultra-fine stainless steel 60μm hair.

| | | | |
|--|------------------------|--|------------------------|
| Product name S-16 SUS0.06 4 line 62 holes • size(wood):thickness 10 x width 17 x total length 235mm • Brush: width 12 x length 75 x hair length 16mm | Image photo | Product name S-12 SUS0.06 4 line 62 holes • size(wood):thickness 10 x width 17 x total length 235mm • Brush: width 12 x length 75 x hair length 12mm | Image photo |
| Product name S-8 SUS0.06 4 line 62 holes • size(wood):thickness 10 x width 17 x total length 235mm • Brush: width 12 x length 75 x hair length 8mm | Image photo | Product name W-16 SUS0.06 8 line 156 holes • size(wood):thickness 10 x width 28 x total length 235mm • Brush: width 25 x length 100 x hair length 16mm | Image photo |
| Product name W-8 SUS0.06 8 line 156 holes • size(wood):thickness 10 x width 28 x total length 235mm • Brush: width 25 x length 100 x hair length 8mm | Image photo | Product name K-16 SUS0.06 6 line • size(wood):thickness 13 x width 50 x total length 230mm • Brush: width 35 x length 100 x hair length 16mm | Image photo |
| Product name M-16 SUS0.06 6 line • size(wood):thickness 14 x width 58 x total length 128mm • Brush: width 50 x length 120 x hair length 16mm | Image photo | • Shape can be selected from 4 types. Some can choose your favorite hair length. • For other special shapes, please feel free to contact us | |

In addition to cleaning bar coaters, it is also used for cleaning gravure rolls.



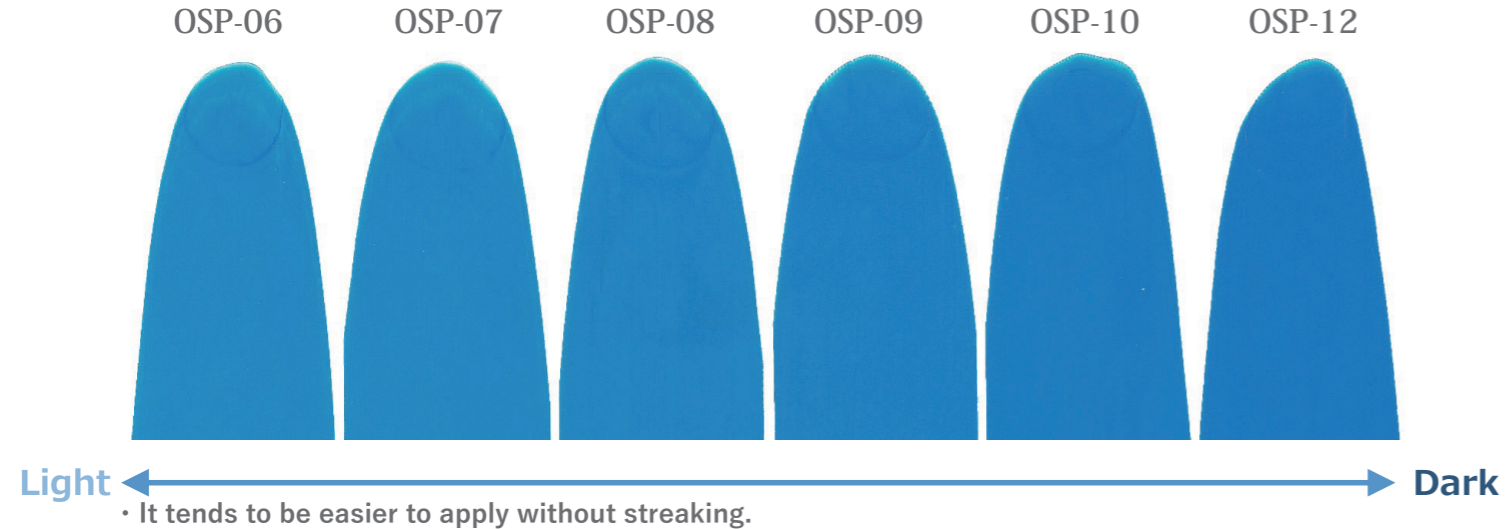
Bar coater cleaning



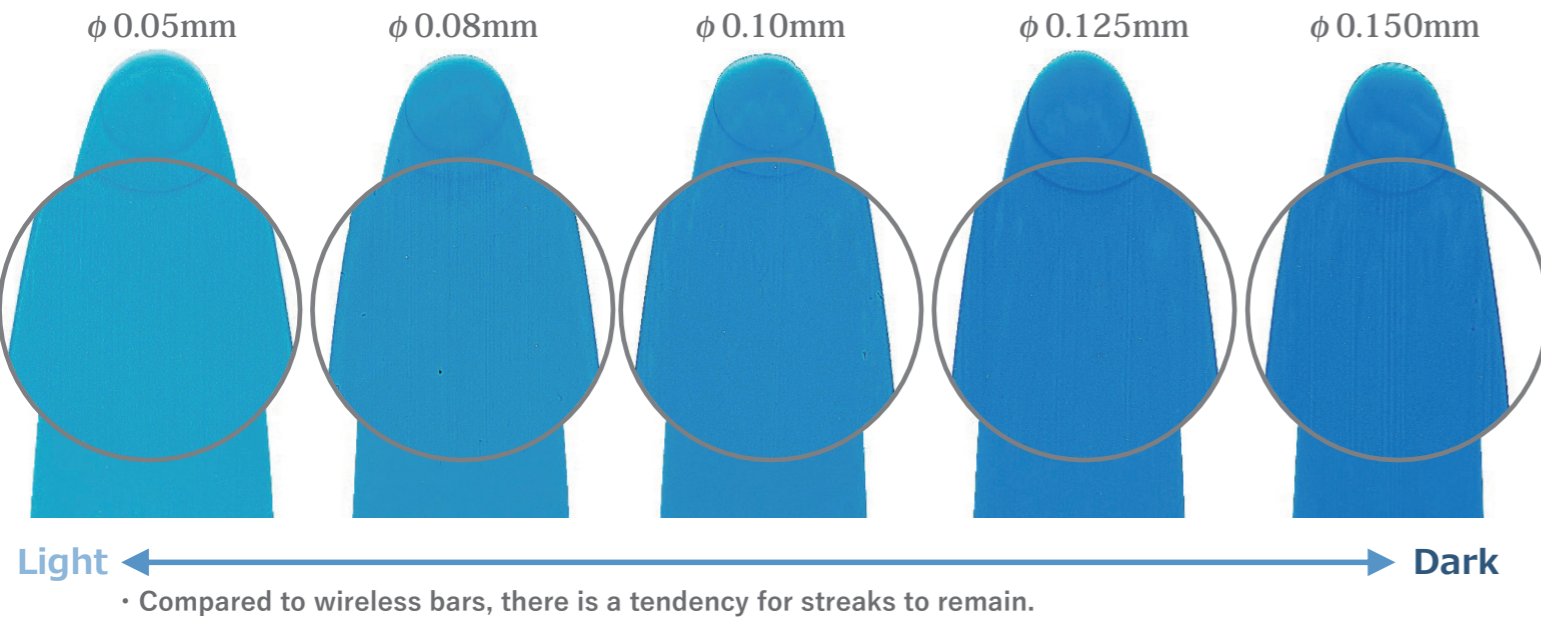
Cleaning of gravure roll

Coating comparison Wireless bar vs. wire bar

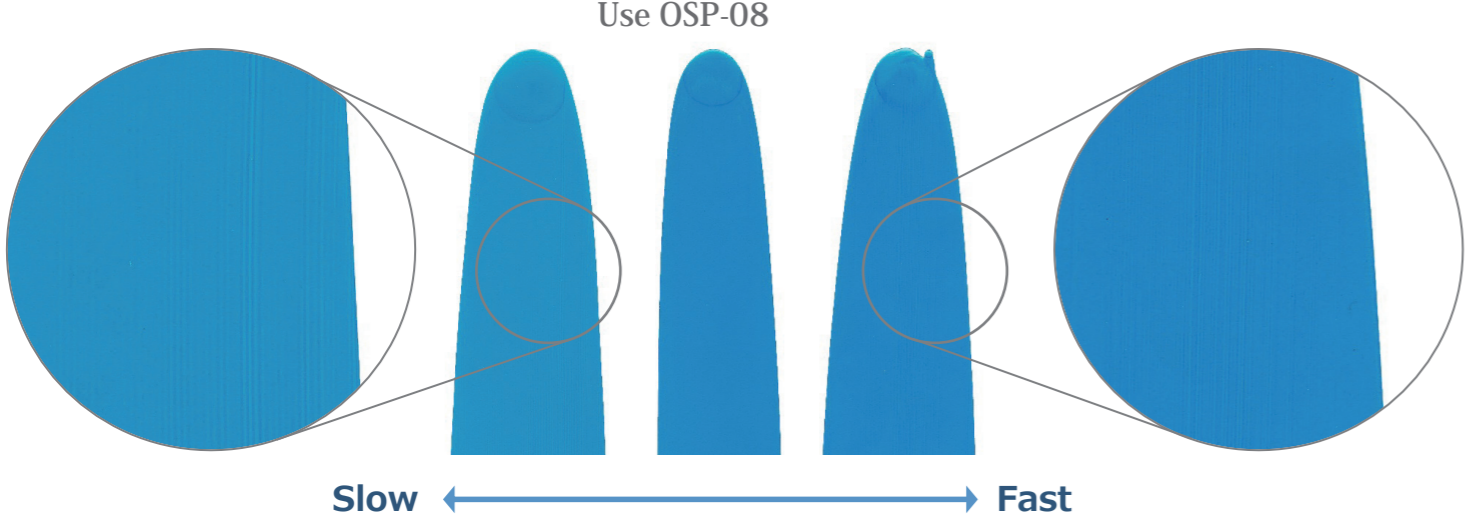
Select-Roller/A-Bar Lineup toning color samples



Wire bar toning color sample



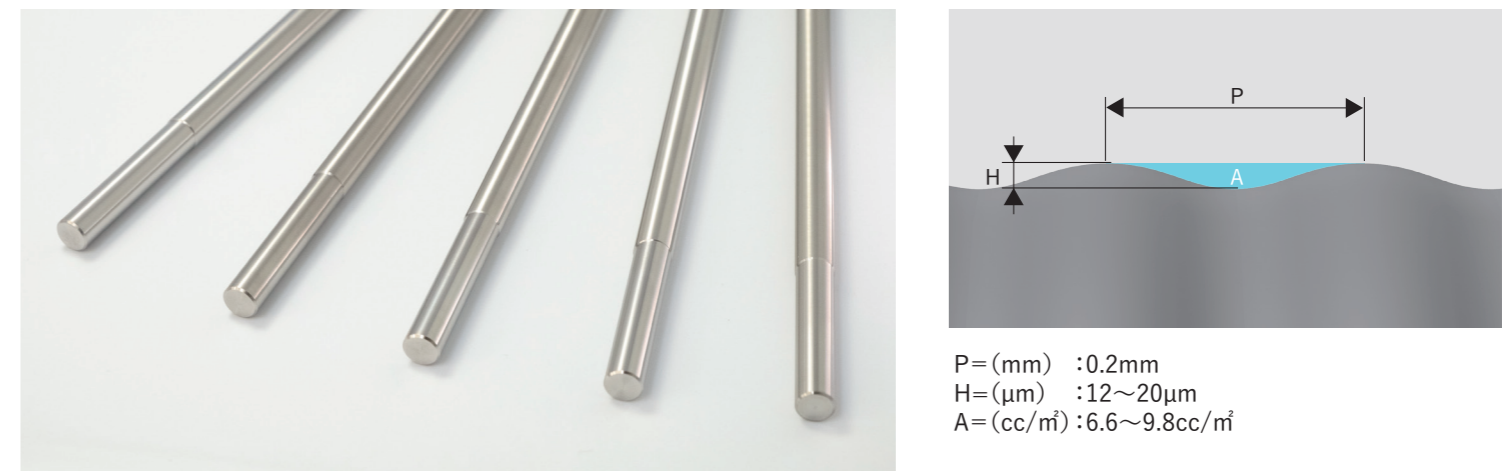
Reproduction of streaks using wirelessbar



- When evaluated under appropriate conditions, there is a tendency for the occurrence of streaks to decrease.
- Appropriate application conditions vary depending on the application liquid and base material.

S-Bar High-precision Bar coater for checking the color of gravure ink or the coating thin

Made to order (Custom Fabrications)

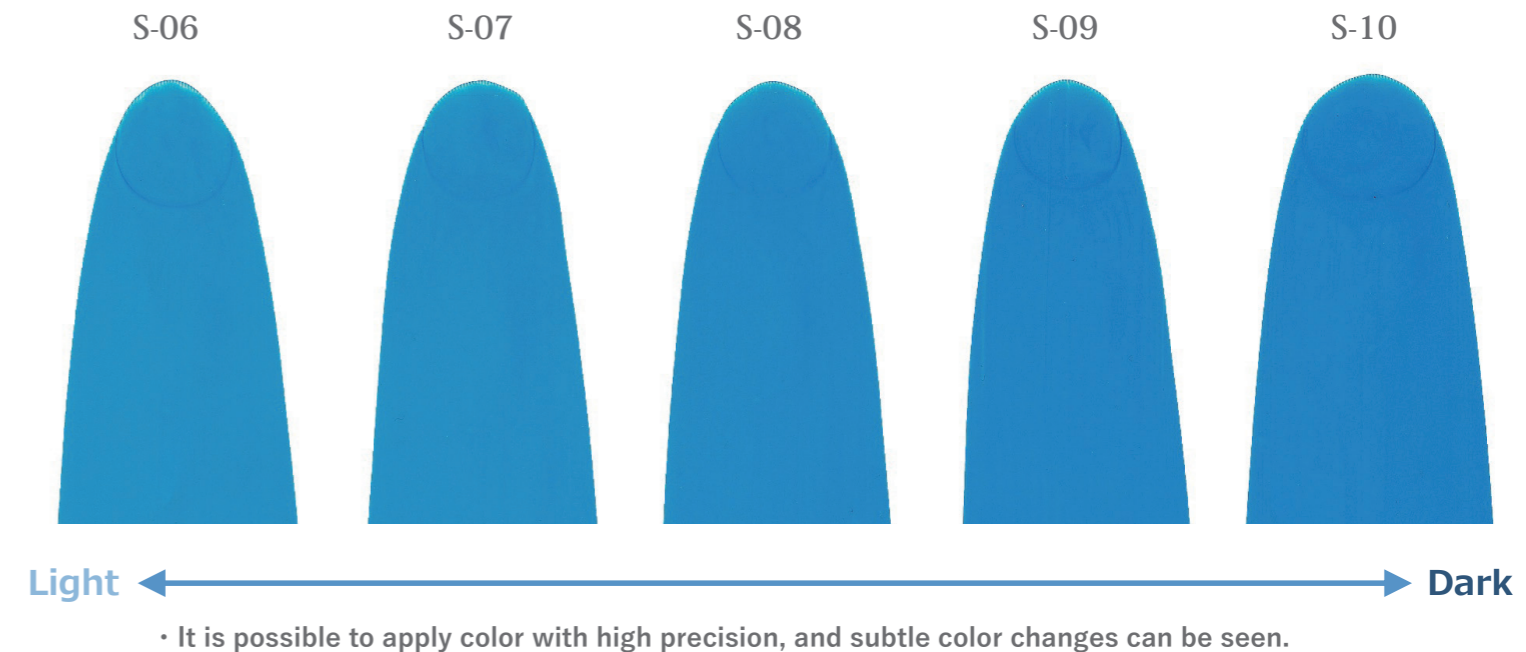


| Model number | Groove specifications | Wet coating thickness cc/m ² (max) |
|--------------|-----------------------|---|
| S-06 | P0.2H12S | 6.6 |
| S-07 | P0.2H14S | 7.3 |
| S-08 | P0.2H15S | 8.1 |
| S-09 | P0.2H18S | 8.9 |
| S-10 | P0.2H20S | 9.8 |

- High-precision management of the pocket capacity of the groove for measuring liquid
- Enables high-precision color toning
- The five specifications have similar groove shapes, standardized about every 10%
- Unify the distance between grooves (pitch: P) to 0.2mm
- Similarize the groove shape, Considering the problem of coating environment depending on the shape
- Pocket volume is manufactured at ± 3%, inspection sheet is also attached

- ※These are custom made
- ※It is possible to manufacture according to the required diameter and length
- ※It can also be manufactured for Select-Roller L60/L250

Toning sample



- ※Materials provided by the customer
- ※Use a liquid with a viscosity of approximately 100 cps.
- ※The appearance of the coating will vary depending on the coating substrate, coating liquid, and coating environment.

Coating comparison

Wireless bar (standard/special)/Wire bar

※Uses Select-Roller L60 Takumi.
 ※Uses water-based multi-purpose paint (viscosity 400 to 450cps)
 ※The appearance of the coating will vary depending on the coating substrate, coating liquid, and coating environment.



#30
(Wire bar)



OSP-80
(Standard Specifications)



OSP-80T
(Special specifications)



OSP-#46
(Wire bar)



OSP-120
(Standard Specifications)



OSP-120T
(Special specifications)



#37
(Wire bar)



OSP-100
(Standard Specifications)



OSP-100T
(Special specifications)



#55
(Wire bar)



OSP-150
(Standard Specifications)



OSP-150T
(Special specifications)

WEB SHOWROOM



OSG SYSTEM PRODUCTS CO.,LTD. WEB SHOWROOM
<https://www.j-osp.com/showroom/>



OSG SYSTEM PRODUCTS CO.,LTD. Official YouTube Channel
<https://www.youtube.com/channel/UCeDBNGeu7gqqdguwHCZnyXg>



オーエスジーシステムプロダクツ株式会社
〒441-1202 愛知県豊川市上長山町手取8番地24
TEL:0533-92-1511 FAX:0533-92-1512
E-mail:osp-info@osg.co.jp
ホームページ <http://www.j-osp.com/>

©代理店 Distributor

OSG SYSTEM PRODUCTS CO.,LTD.

8-24, Tedori, Kaminagayama-cho, Toyokawa
City, Aichi Pref. 441-1202, Japan
Phone:0533-92-1511 Fax:0533-92-1512
E-mail:osp-info@osg.co.jp
Homepage <http://www.j-osp.com/>